

# CAPABILITY STATEMENT



# HEWATT

**Communication Honesty Accountability Respect Teamwork**



## **THE COMPANY**

Since commencing operations in early 1990, HEWATT Pty Ltd is now recognised as an industry leader for civil works in the ACT and surrounding region. The company has grown from its modest start with one grader on hourly hire, to over 165 plant and vehicles supporting over 280 fulltime employees. Annual turnover of the company for the previous three years has been over \$60m.

Hewatt is regularly engaged as the head contractor or main subcontractor, utilising its strong network of specialist subcontractors and consultants as required. We have won Master Builder Association awards in 2001, 2002, 2003, 2004, 2007, 2008, 2010, 2011 and 2012, including Subcontractor of the Year, twice, and Civil Project of the Year.

A notable achievement has been the construction of the Canberra International Airport (CIA) runway and taxiway extension – reportedly the most significant upgrade to an airport runway in Australia in the last 20 years. We are engaged, and have been over the past 11 years, to develop the CIA precinct. This involves construction of footprints of buildings, hangars, carparks, internal roads and the new terminal.

Hewatt is delighted to be part of the Fulton Hogan Majura Parkway construction team as a major partner developing this crucial access route for the ACT over the next two to three years.

Currently Hewatt is the head contractor for several major projects and a range of smaller projects, as well as being the subcontractor to numerous projects. Our major projects include Molonglo Infrastructure Stage 1A and North Weston Pond, Horse Park Drive Extensions 1 and 2, Old Cooma Road and the Merimbula Airport Runway Resurfacing.

Lead by Geoff Hewatt, Hewatt is arguably the leading civil earthworks contractor in the ACT and Southern NSW and is solidly positioned for future growth. We are keen to develop new partnerships and continue to produce high quality outcomes for major capital works projects in the region.

**Hewatt is proud of its reputation and is well positioned for future growth. Our solid base of clients, repeatedly choose us for our quality, reliability and value for money.**

## QUALITY OF WORK

Hewatt is committed to producing quality work on time. Our Quality Assurance System meets 3<sup>rd</sup> party certification for:

ISO 9001:2008	Quality Management Standard
ISO 14001:2004	Environmental Management Standard
AS/NZS 4801:2001	Health & Safety Management Standard



We are proud of this achievement and it confirms the priority that Hewatt accords to its comprehensive operational practices and procedures. Our projects are managed under our strict guidelines, which require a broad range of documentation, reporting and regular auditing.

Hewatt has complied with the Austroads National Pre-qualification Scheme for Civil (Road and Bridge) Construction Contracts, demonstrating our technical ability and financial resources. Our rating is F20, B2, R4 for Civil works. Certificate No is PQ NPS C280, with mutual recognition gained in NSW - Certificate No. NSW154. Specialist Categories include LS Land Sub-Division; TSH Trunk Services, Hydraulics; MS Major Stormwater, TSS Trunk Services, Steam; MSH Mains Services, Hydraulics; PLRR Pipe Laying and Road Re-instatement; D Demolition; CL(R)-20 Contractor – Landscaping.

We operate a full suite of quality and safety control procedures across a range of jurisdictions in accordance with ACT Standard Specification, RTA Q7 and AusSpec. Our procedures also extend to comply with specific contract specifications, codes of practice and regulatory requirements.



**Blasting**



**Kerb & Gutter**



**Common Trench**



**Pump Well**

## CAPABILITIES

The Hewatt portfolio encompasses the full range of civil projects, from rural residential subdivisions to multi-million dollar constructions of both large buildings and dual carriageway highways. Our strengths are not limited to our plant capabilities – our team of experienced engineers provide our clients with the best value for money construction solution without compromising quality.

In addition, our plant operators have a high level of competency with many having 20 – 35 years of experience.

Hewatt's capability is enhanced by having its own:

- On site fitters
- Fully equipped workshop
- Boiler makers
- Fuel trucks
- Concrete kerb machines
- Crushers/Screens
- Floats
- ATS systems
- GPS systems on most plant items

We specialise in the extraction, transportation and disposal of contaminated materials, including asbestos (ACM), with all staff involved, appropriately trained. To-date over 250,000 m<sup>3</sup> of ACM has been disposed of without incident or risk to staff.

The following is a summary of the areas of work that Hewatt regularly undertakes:

- Design and Construct
- Site establishment, temporary services and decommissioning of existing services
- Environmental controls
- Temporary traffic management measures
- Clearing & grubbing
- Survey and level control
- Bulk earthworks
- Blasting
- Detailed excavation
- Flexible and rigid pavement construction
- Testing and conformance of completed works
- Road furniture, signalized intersections and street lighting
- Intersection works including kerbs, line marking and traffic controls
- Underground services (hydraulic and utility)
- Preparation of building platforms
- Detailed footing excavation
- Bored piers
- Shotcrete and batter stabilisation
- Soil nails and ground anchors
- Soft and hard landscaping



**Workshop**



## **TECHNOLOGY**

Hewatt is also a recognised leader in the use of GPS systems and was the first in Canberra to use mobile technology to stream corrections via the internet. We have established our own network in the sky and do not require base station operations. The following equipment is fully owned by Hewatt:

- Two Trimble base stations;
- Three Trimble Rovers with internet capable mini computers;
- Two Leica Rovers with internet capable receivers;
- Two Leica Total Stations, and
- Eight Trimble/Leica GPS fitted equipment such as graders, dozers and excavators.

Hewatt also has the following design software to not only process data for GPS use but to design if required:

- 12D road design software licences;
- Autocad licences;
- One Shell Bands licence for deep lift asphalt design;

## **SIGNIFICANT & CURRENT COMPLEX PROJECTS**

The examples on the following pages demonstrate Hewatt's recent experience with some of the major capital works activities across the ACT and NSW South Coast. Our success in these projects has been recognised with numerous awards and commendations – something Hewatt is very proud of. More information on other works we have delivered in the region can be provided on request, or found on our website ([www.hewatt.com.au](http://www.hewatt.com.au)).

The following is a list of projects featured below:

- Majura Parkway
- Molonglo Infrastructure Stage 1A & North Weston Pond
- Horse Park Drive Extension 1
- Horse Park Drive Extension 2
- Old Cooma Road
- Merimbula Airport Runway Resurfacing
- Bombala Sawmill Expansion
- Princes Highway, Victoria creek, Central Tilba Upgrade
- Kings Highway Southern Deviation
- Jiparu Stage 2
- Canberra International Airport
- Runway Extension – Canberra International Airport (CIA)
- Princess Highway, Oak Flats to Dunmore Realignment - Kiama
- Direct Factory Outlet (DFO) - Canberra
- Gungahlin Drive Extension
- Yowani Stormwater Harvesting

### **Majura Parkway**

Hewatt, as the main Civil subcontractor, in partnership with Fulton Hogan, is undertaking the construction of 11.5km of new dual carriageway from the Federal Highway to the Monaro Highway.

**Dates:** Nov 2013 - ongoing

**Principal:** Roads ACT

**Head Contractor:** Fulton Hogan

**Project elements include:** clearing, bulk earthworks, new services, property adjustments, traffic control devices, street lighting, traffic signals, landscaping and associated civil works.



### **Molonglo Infrastructure Stage 1A & North Weston Pond**

Molonglo Infrastructure, Stage 1A, and North Weston Pond civil engineering, structural and landscaping works

**Dates:** April 2010 - ongoing

**Principal:** Roads ACT

**Head Contractor:** Hewatt



**Project elements include:** Site establishment and maintenance/control of the project work site. Remediation of existing contaminated areas, involving the removal of some 90,000t of ACM, 20,000t of TPH, 60,000m3 EIL. Bulk earthworks for new road formations, ponds and structures. New road pavements consisting of Asphalt overlay and construction of new full depth heavy duty asphalt pavements. Major concrete structures including 3 x bridges, 4 x GPT's, pond outfalls, RE walls, 2 x Arches. Major relocations of gas, water mains 300dia , overhead and underground power, substations, communications, sewer and stormwater. Installation of new traffic control devices such as road signs, pavement marking, and traffic intersection signals & installation of street lights.

**Special Features:** As the site was a former waste water treatment facility and was then treated as a former uncontrolled disposal site, significant and uncontrolled contamination, including asbestos, hydrocarbon, building rubble, tyres, fat, and oil have been found across most of the site and a systematic approach of stockpiling, classifying and then disposing of the material has been developed by Hewatt.



**Bebo Arch Footing**



**Pond Overflow Structure**



**Pond Outlet Valve**

## **Horse Park Drive Extension 1**

The extension of Horse Park Drive to Moncrieff Group Centre (2.2km) involves the construction of a single, two-way carriageway between the existing Horse Park Drive, Amaroo, and the future planned Mirrabai Drive Extension, Moncrieff.

**Dates:** July 2012 – ongoing  
**Principal:** ACT Shared Services Procurement  
**Head Contractor:** Hewatt

**Project elements include:** Preliminaries, provision for Traffic, Earthworks, Underground Services, Flexible Pavement Construction, Concrete Kerbs, Footpaths and Minor Works, Incidental Works, Landscaping, Road Signs, Pavement Marking, Traffic Signals, Street lighting, Major Concrete Works and bridge construction.



## **Horse Park Drive Extension 2**

The extension of Horse Park Drive from Burrumarra Avenue to Mirrabai Drive involves the construction of a 1.8km long single carriageway road to provide connection to the proposed residential area of Taylor and Moncrieff West. The site is located between the existing intersection of Burrumarra Avenue, Ngunnawal, and the future planned Mirrabai Drive Extension, Moncrieff.

**Dates:** March 2013 – ongoing  
**Principal:** ACT Economic Development Directorate  
**Head Contractor:** Hewatt

**Project elements include:** Preliminaries, Provision for Traffic, Earthworks, Underground Services, Flexible Pavement Construction, Concrete Kerbs, Footpaths and Minor Works, Incidental Works, Landscaping, Road Signs, Pavement Marking, Traffic Signals, Street Lighting, Major Concrete Works and Bridge Construction.





## Old Cooma Road

The realignment of 1.8km of the existing Old Cooma Road and delivery of 4.5km of shared trench, South of Queanbeyan, including alterations to drainage, street lighting, landscaping and associated works.

**Dates:** January 2013 - ongoing  
**Principal:** Queanbeyan City Council  
**Head Contractor:** Hewatt

**Project elements include:** Earthworks, flexible pavement construction for the length of the works. A shared trench located in the service corridor of the road to service the new suburb of Googong, relocation of various services including gas, electricity and telecommunications. Temporary traffic management and erosion & sediment control measures.



## Merimbula Airport Runway Resurfacing

Resurfacing work, including shape correction for runway 03/21 through an additional overlay, rehabilitation of the taxiway and apron, and installation of runway lighting.

**Dates:** March 2013 -  
**Principal:** Bega Valley Shire Council  
**Head Contractor:** Hewatt

**Project elements include:** Clearing and grubbing, Stripping of topsoil from site, stockpiling of topsoil and spreading and grading of topsoil; Earthworks for pavement formation construction including excavation to boxing level, pavement, trimming and grading; Supply, trenching, laying, jointing and backfilling and necessary bedding of pipe drains, subsurface drains, and service conduits and cables; Construction of a granular runway pavement and overlays with a spray sealed surface; drainage; Construction of lighting infrastructure; Landscaping.



### **Bombala Sawmill Expansion**

Expansion of the existing Sawmill to include a new Green Mill and materials handling line, relocation of the existing Dry Mill facility and installation of a new Treatment Plant.

**Dates:** September 2011 – January 2013

**Principal:** Tasco Pty Ltd

**Head Contractor:** Hewatt

**Project elements included:** Site establishment, construction of a new carpark, road accesses, building pad, retention ponds, workshop pad, loading dock, underground services, relocation of existing services, reticulated water and removal of contaminants, kerb and guttering, OCI, concrete works and crossings over the North-Eastern Gas Pipeline Easement.

**Special features:** Hewatt was engaged on this project as the principal contractor to oversee safety, environment and WHS across all trades. The upgrade of this facility was constructed whilst keeping the existing sawmill at full capacity. This involved coordination between the existing sawmill operations, local Council, the building contractor and Hewatt.



**Site works**

## **Princes Highway, Victoria Creek, Central Tilba Upgrade**

Realignment of the Princes Highway, approximately 13km South of Narooma, with construction of approximately 3.2km of new carriageway.

**Dates:** September 2011 – January 2013  
**Principal:** Roads and Marine Services  
**Head Contractor:** Seymour Whyte

**Project elements included:** Construction of one northbound and one southbound lane, with an overtaking lane in each direction and construction of new intersections. Major earthworks of topsoil removal, subgrade preparation, drilling and blasting, construction of embankments, removal and replacement of unsuitable material, construction of a selected material zone and verge zones. Construction of kerbs and guttering, stormwater and subsurface drainage and box culverts. Construction of pavements.





## Kings Highway Southern Deviation

This project comprised construction of a 5km deviation to the existing Kings Highway at Kowen in the ACT between Queanbeyan and Bungendore. This Highway forms part of a key component of the regional road network between the ACT and NSW.

**Dates:** February 2011 – April 2012  
**Principal:** Roads ACT  
**Head Contractor:** Hewatt

**Project elements included:** Bulk earthworks for new road formations, ponds, structures. Underground services including subsoils and stormwater. Kerbs, New road pavements. Provision of two underpasses to facilitate stock movement. Major concrete structures, including culverts and bebo arches. Installation of new traffic control devices such as road signs, pavement marking, and road furniture.

**Special Features:** Community Liaison with Land holders, community groups (cyclists), Defence Headquarters and Geoscience Australia. Drilling and blasting for the 15m deep cut in the main cutting. High degree of traffic control required at the tie in connections at each end with the existing Kings Hwy. No detours or lane closures are allowed either immediately before or after any holiday periods. With four registered water courses cross the project, all works were under the control of a Water Ways Works licence. Compliance with the licence requires strict environmental controls and site practices.





## **Jiparu Stage 2**

This project comprised the Second Stage of the Jiparu Rural Subdivision. This privately owned site is located off Valencia Drive, Murrumbateman, NSW, about 30 km from Canberra. This second stage included 2.8kms of roads for 46 proposed rural acreage blocks.

**Awards:** *MBA Excellence in Building 2012 - Civil Subdivision*

**Dates:** February 2011 – December 2011

**Principal:** Wooljump Pty Ltd

**Head Contractor:** Hewatt

**Project elements included:** Earthworks and road pavements for the construction of a 2.8 km road throughout the subdivision; a gravelled entry into each residential block; a cycle path parallel to the road; common trench; creation of 2 bus bays; installation of Street Signs, Road Signs and Road Furniture; landscaping of road verges and planting of trees; storm water management; and construction of 2 dams to hold stormwater.



## **Canberra International Airport**

Continual involvement in the construction of the Brindabella Business Park, aircraft hangars and other specialist airport related construction.

**Dates:** June 2008 - ongoing

**Principal:** Canberra International Airport

**Head Contractor:** Construction Control

**Project elements include:** Earthworks, wall shoring, underground services, road pavements, kerb and guttering plus general concrete works.

**Special Features:** All works within the airport are undertaken to strict airside security requirements. All of the main access roads to the terminal were reconstructed or relocated as part of the works. This required a high degree of planning with airport operations, diversion roads, some night shift work and no compromise with safety for the public.





## **Runway Extension – Canberra International Airport (CIA)**

The extension of runway 35 and taxiway B by 630m within a 12 week program with minimal restrictions to airport operations.

**Awards:** *MBA Excellence in Building 2007 – Civil Project of the Year (open)*

*CCF Earth Awards 2007 – Winner Civil Project \$5m-\$20m*

*Engineering Excellence Awards 2007 – Highly Commended*

**Dates:** March 2006 – June 2006

**Principal:** Canberra International Airport

**Project elements include:** Complete construction of runway and taxiway extension, including a flexible pavement of 1.2m depth, stormwater detention and floodway system, electrical and communications conduiting.

**Achievements:** Intelligent programming enabled Hewatt to consistently place, compact and trim 9000 tonne of pavement gravel per day. By stockpiling material from the commencement of the job, we were not restricted by our supplier's capability to produce only 3000 tonne of gravel per day and completed this job on time and under budget.



## **Princess Highway, Oak Flats to Dunmore Realignment - Kiama**

Realignment of the dual carriageway highway for approximately 5km

**Awards:** *MBA Excellence in Building 2010 – Civil Sub-Contractor of the Year*

**Dates:** August 2007 - October 2008

**Principal:** RTA

**Head Contractor:** FH Group

**Project elements include:** Bulk earthworks for the entire project, including 455,000 m<sup>3</sup> of soft cut/fill



and 30,000 m<sup>3</sup> of blasting.



## **Direct Factory Outlet (DFO) - Canberra**

Construction of a 60,000 m<sup>2</sup> retail outlet with a further 60,000 m<sup>2</sup> of underground parking

***Awards: MBA Excellence in Building 2008 – Merit Civil Project of the Year***

**Dates:** April 2007 – August 2008

**Principal:** Contexx

**Project elements include:** Bulk excavation for building (370,000 m<sup>3</sup>) of which 95,000 m<sup>3</sup> of drilling and blasting, structural retaining systems for excavation batters, piers and footing systems for building and external civil works.

The excavated material was a high quality parent material. Crushers (50t and 35t) were used on site to break down the rock and value added to the material to produce several specific materials. Use of a Komatsu D475 Dozer with a mass of 110t, enabled more of the weathered rock to be excavated and reduced the need for blasting. Blasting against Defence optic fibre, Telstra, Optus, Agility 250mm steel HP gas main, ActEW water supply. Coordination with Canberra Airport Air Traffic Control with requirement to obtain an airways clearance from Canberra Tower within 2min window of each shot. Originally intended 70 separate shots were reduced to 25 and the potential for fly rock was dramatically reduced to provide an overall safer outcome.

Various techniques were used in the footing system to deal with undrillable holes including drill and blast, brystar, specialist drilling heads from the United States (cluster hammers) and redesign. Drilling rates as low as 30mm per hour were common in the very hard rock.





## **Gungahlin Drive Extension – Packages A & B**

Extension of the Gungahlin Drive from Barton Highway to Glenloch Interchange for 8km.

### ***Awards: MBA Excellence in Building 2008 – Civil Sub-Contractor of the Year***

**Dates:** November 2005 – December 2007  
**Principal:** Roads ACT  
**Head Contractor:** FHJV

**Project elements include:** Bulk earthworks for the entire project, including 130,000m<sup>3</sup> of blasting and 1.2million m<sup>3</sup> of cut/fill, also stockpile of topsoil, boxing, select materials and pavements.

Hewatt managed detailed design, documentation of the Safety Management Plan, coordination and execution of blasting operations at Glenloch Interchange and also Aranda. The works involved blasting within 10m beneath 11kv and 132kv overhead power lines, within 25m of ActEW's 900 dia bulk water supply main and 130m from residences in Aranda.



**Exit Ramp**

The earthworks were spread over approximately 15km, some of the cut to fill had to be hauled over 2.5km and crossed major arterial roads that were required to remain open to public traffic for the duration of the works. In conjunction with FHJV traffic control procedures were developed to allow cycle paths to cross main haul roads and signalised scraper crossings were constructed at Belconnen Way and Ginninderra Dr. All operators were stringently inducted to ensure the safety considerations of potential conflict between heavy earthmoving plant and the public were at the fore front of daily operations.



**Bulk Earthworks**

## Yowani Stormwater Harvesting - Canberra

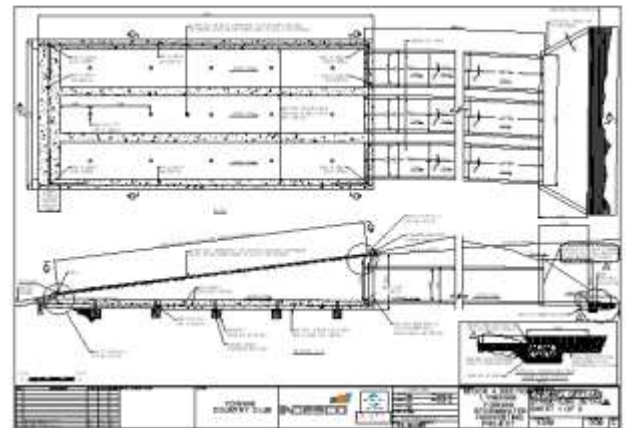
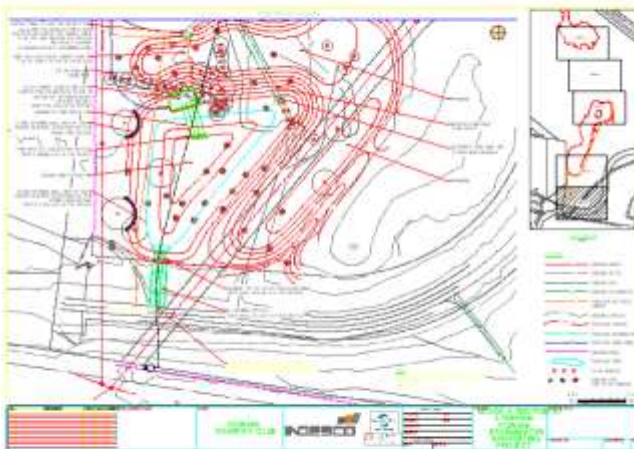
Design and construction of 2ML pond with off take structure, pumping station and 400mm dia rising main. Hewatt redesigned the pumping station, pumps and rising main.

**Dates:** November 2011 – February 2012

**Principal:** Yowani Country Club

**Head Contractor:** Hewatt

**Project elements include:** Redesign of pumping station, pumps, and rising main to provide savings to the Client. In addition, bulk earthworks for the entire project and construction of the concrete off take structure and pump station.



## KEY PERSONNEL

# Communication Honesty Accountability Respect Teamwork



### **Managing Director: Geoff Hewatt**

Geoff Hewatt is the Managing Director of the firm with 30 years experience in the civil works field. Geoff has been the Project Director for all major projects undertaken by the firm.

Contact Details:      Mobile - 0417 632 209  
Email - [geoff@hewatt.com.au](mailto:geoff@hewatt.com.au)



### **Business Director: Renato Gaspari**

Renato Gaspari joined Hewatt in 1997 and is the Business Manager, who is responsible for the financial administration of the company including, payroll, banking, accounts, expenditure, and office administration.

Contact Details:      Office - 6227 5694  
Email - [renato@hewatt.com.au](mailto:renato@hewatt.com.au)



### **Engineering Manager: Alex Baird**

Alex Baird has 23 years experience, with project experience in the Australian Capital Territory, New South Wales and Scotland.

Contact Details:      Mobile – 0419 879 686  
Email - [alex@hewatt.com.au](mailto:alex@hewatt.com.au)



### **Manager Projects ACT: Antony Tozer**

With over 20 years experience in civil engineering, Antony oversees our projects within the ACT.

Contact Details:      Mobile – 0427 131 603  
Email – [antony.tozer@hewatt.com.au](mailto:antony.tozer@hewatt.com.au)

## **SENIOR STAFF**

### **Project Engineers:**

Robert Ridgway  
Stephen Solari  
Outhong Phongsavath (Estimator)  
Jason Brown  
James Prosser  
Mark Nabua  
Ryan shepherd  
Pat Miller  
Steve Pemberton  
Leigh Turner

George Caldow  
Greg Nicholls  
David Badenoch-Jones  
Jose Balajadia  
Michael Charles  
Sean Donohoe  
Kesh Prabhu  
Paul Ingster  
Seamus Martin  
Absalom Badza

### **Surveyors:**

Gus Tierney  
Mark Harvey

Paul Aplin

### **Foremen:**

Robert Knight (Operations Manager)  
Danny Hoffman (Construction Manager)

Ken Fogarty  
Bruce Schafer  
Fred Scanes  
John Brooks  
Glenn Sommerauer  
Rick Venables  
Zac Senior  
Robert Miller

Blake Fuller  
Phil Caldwell  
Craig Smyth  
Colin Palmer  
John Berry  
Daryl Cooke  
Matt Rodden  
Terry Ford

### **Fitters:**

Scott Forrester (Fleet Manager)

John Damoulakis  
Marty Lomas  
Daniel Smith  
Charles McKillop  
Arn Ryan  
Alan Manwaring

Chris Ryan  
Tony Mills  
Ian Southwell  
Cameron Tyrell  
Michael Parr  
Reuben Olah

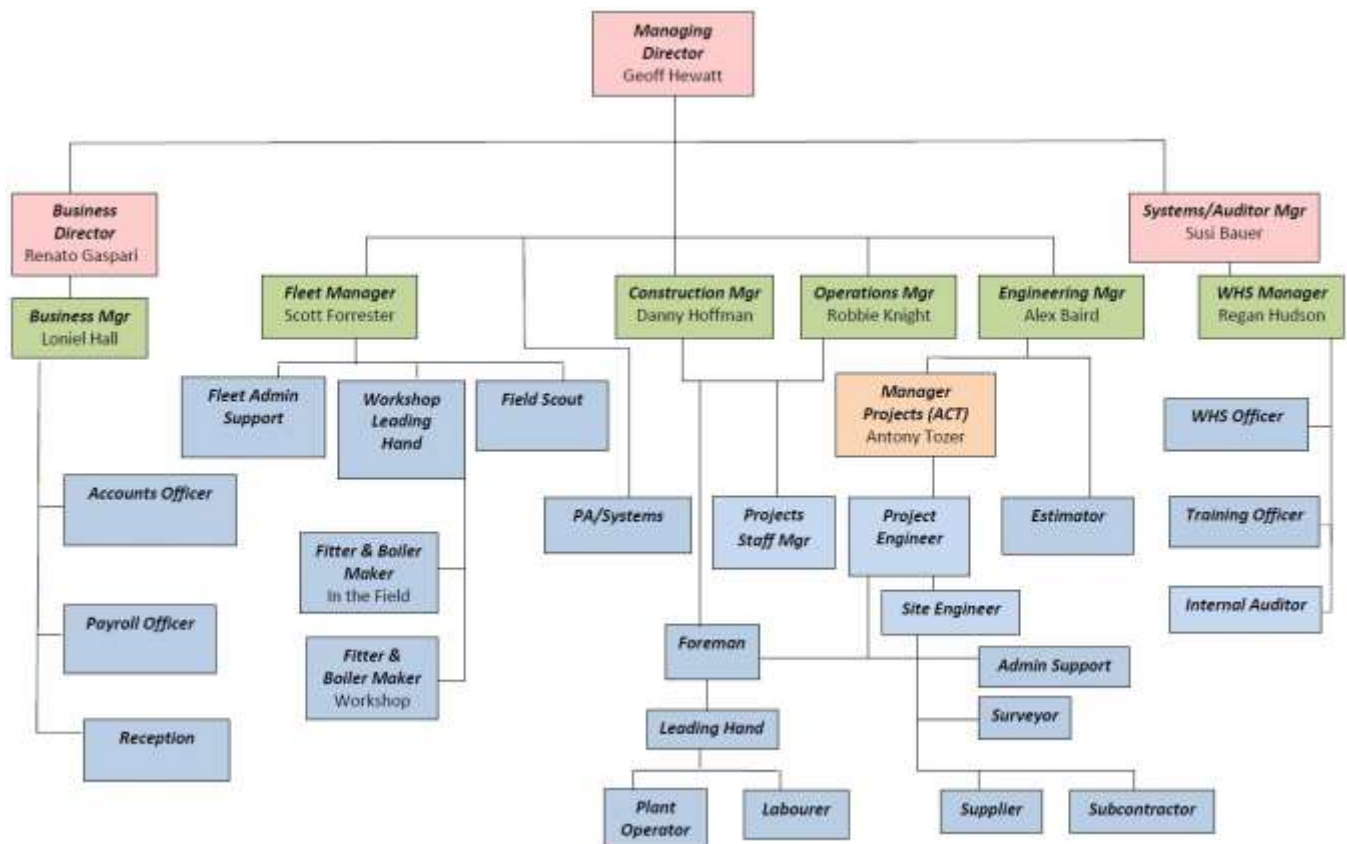
### **Systems/WH&S:**

Susi Bauer  
Regan Hudson  
Jayson Withers  
Graham Cooper  
Stuart Green  
Wendy Williamson

Allan Hudson (Training Officer)  
Peter Hewatt (Projects Staffing)



## HEWATT – ORGANISATION CHART



On site



Induction

## WORKPLACE RELATIONS

Since its inception Hewatt has strived for excellent workplace relations both internally, with our staff and sub-contractors, and externally with our clients, supervising engineers and statutory authorities.

We meet or exceed all award conditions for our staff and comply with any site agreements applicable to a project that may have been negotiated with the principal or major contractor. We have a certified EBA with our employees.

Most of our staff are long-term employees, having been with the firm for five to fifteen years and we enjoy long term working relationships with the majority of our subcontractors and consultants.

## SAFETY PERFORMANCE

Hewatt's Work Health and Safety Plan forms are an integral part of our Quality Assurance System. Elements of our safety awareness and performance are:

- Our Safety Committee meets regularly and is headed by a dedicated WH&S Manager
- All sites are regularly monitored by our WH&S officers.
- Hewatt Operator Training logbooks to verify their development in competency
- Dedicated Training Officer for training and verification of Operators Competencies
- RTA safety specifications and ongoing regular inspections of plant by our fitters
- Maintenance schedules for all machines
- On-site fitters, plus a fully equipped workshop to maintain all machinery
- Under the WHS&R Plan, our staff undertake training in health and safety
- First Aid certificates, plant tickets and white cards, are checked and updated frequently
- Protective clothing and apparatus are supplied and worn by our operators as required
- Drug and Alcohol Testing



**QA**



**WHS PPE**

## **ENVIRONMENTAL MANAGEMENT**

Environmental concerns and control measures are a high priority for all our earthworks contracts. On minor projects, we have implemented supplied Soil and Water Management Plans. When the plans have not been supplied, we have prepared and implemented our own Soil and Water Management Plans.

On larger or more sensitive projects, prior to commencement of the works, discussions and/or site meetings have been held with the applicable authorities or statutory bodies to review the environmental plan and proposed control measures. The control measures to protect the site and surrounding areas throughout the construction period are then established for each section of the project prior to commencement of the works.

Where necessary, long-term controls are set in place at the end of the works for the ongoing protection of the environment.



**Molonglo Stormwater Management**



**Silt Fencing**



## PLANT AND EQUIPMENT – Owned

### **Graders**

Caterpillar 12H Grader  
Caterpillar 140H Grader



### **Trucks**

Kenworth Truck and Dog  
Rigid Truck  
Volvo NH16 (3 x 8 axle float & Dolly) 100t Payload  
Kenworth T650 (3 x 8 axle float & Dolly) 100t Payload  
Freightliner Float (tri-axle float)  
Isuzu C/Cab & Crane  
40T 6 x 4 Volvo Dump Truck  
35T 6x4 Volvo Dump Truck  
30T 6x4 Volvo Dump Truck  
35D 6x4 Volvo Dump Truck



### **Rollers**

Wacker Trench Roller (remote control)  
Caterpillar CB-224C Twin/Drum 2.5 ton  
Caterpillar CS-563D Smooth/Drum 12 tonne  
Caterpillar CP-563D Padfoot 12 tonne  
Caterpillar CP-663E Padfoot 16 tonne  
Bomag BW216 Padfoot  
Bomag BW216 Smoothdrum  
Caterpillar 815 F/B Compactor  
Caterpillar 825C Compactor  
Caterpillar 825H Compactor



### **Excavators**

Caterpillar 305 Mini Excavator 5 tonne  
Yanmar Vio75 Excavator 7.5 tonne  
Sumitomo SH200-Excavator 20 tonne  
Sumitomo SH 300 Excavator 30 tonne  
Sumitomo SH 0135 Excavator 14 tonne  
Volvo EC240LC-3 Excavator 24 tonne





## Bulldozers

Caterpillar D5GXL  
Caterpillar D6R  
Caterpillar D7R, D7H Dozer  
Caterpillar D8R Dozer  
Caterpillar D8T Dozer  
Komatsu 275 Dozer (D9 size)  
Caterpillar D10T, D10R & D10N Dozers



## Scrapers

Cat 613C Elevator Scraper  
John Deere 865 Elevator Scraper  
Caterpillar 623 E Elevator Scraper  
Caterpillar 621B Scraper  
Caterpillar 621G Scraper  
Caterpillar 627 B Scraper  
Caterpillar 627 G Scraper  
Caterpillar 631D Scraper  
Caterpillar 631 E Scraper  
Caterpillar 631G Scraper



## Crushers

Finlay J1175 45T  
Finlay Reclaimer



## Others

Caterpillar 432E Backhoe  
Bobcat  
Komatsu Wheel Loader WA250-3  
Kawasaki Loader 90ZV  
Hino Street Sweeper



## Water Trucks

Volvo Watercart 12,000ltr/18,000ltr  
Semi Watercart 30,000ltr



## Small Plant

Small Plant (Wacker, pumps, plates, utes etc)  
All size Buckets, Tiltheads, Rippers, Rock grabs

## **SUPPLIERS & SUBCONTRACTORS**

<b>Company</b>	<b>Category</b>
Able Landscaping	Landscaping work
ACT Civil	Sewer, Water, Stormwater construction
ACT Sumps & Manholes	Pit building
Boral Construction Materials Group	Gravel, Asphaltic Concrete supplier
Bridge & Marine Pty Ltd	Bridge, Bebo Arch, Box Culvert installation
C.E. Industries Pty Ltd	Construction materials
Canberra Concrete Recyclers Pty Ltd	Concrete recycler
Canberra Sand & Gravel	Sand & gravel supplier
Capital Landscaping	Landscaping work
Capital Precast & Drainage	Stormwater Pipes, Box Culverts, Headwalls
Downer EDI Works Pty Ltd	Asphaltic Concrete work
Ecowise Services	Street Lights, Traffic Signals construction
Elvin Group Pty Ltd	Readymix Concrete supplier
Eroscape	Mortared Stone Pitching work
Holcim	Gravel, Readymix Concrete supplier
Humes	Stormwater Pipes, Bebo Arches, Box Culverts, Headwalls
J & A Geotech Testing Pty Ltd	Geotechnical Testing work
Lines, Signs & Pavements Pty Ltd	Line marking, Traffic Signals
Michael Bereza	Surveyor
Michael Deane Fencing Pty Ltd	Road Furniture, Fencing
Nationwide Slipforming	Kerb & Concrete Pavement work
One Steel Reinforcing	Steel Reinforcement
Patches Asphalt	Hotmix, Bitumen, AC Pavement work
Perimetech Pty Ltd	Fencing Work
Reece Pty Ltd	Conduit supplier
Revegetation & Erosion Control Services	Rip Rap Protection, Rock Mattresses, Gabions
Tyco Water	Water Main, Sewer Main supplier
Vinidex Pty Limited	Conduit supplier
Waterland	Irrigation work

## **REFEREES**

### **Cardno Young Pty Ltd**

John Foster                      Principal                      Phone: 02 6112 4500  
 Project:                      Molonglo Infrastructure 1A & Weston Ponds  
 Scope of Works:              Civil engineering, structural and landscaping works

### **Fulton Hogan**

Harry Spray                      Contract Manager                      Phone: 0417 043 202 Office: 02 8346 9400  
 Project:                      Oaksflats to Dunmore realignment  
 Scope of Works:              Bulk earthworks for 8 km of dual highway

### **Canberra International Airport**

Steve Byron                      Contract Manager                      Phone: 0411 222 789 Office: 02 6275 2222  
 Project:                      Runway and Taxiway Extension  
 Scope of Works:              Bulk excavations, pavements, stormwater, electrical conduits and landscaping.

### **Construction Control**

Ian Bowyer                      Director                      Phone: 0419 196 325  
 Project:                      Canberra International  
    Airport  
 Scope of Works              Full reconstruction of all facilities

### **SMEC**

Ken Bromley                      Engineer                      Phone: 0408 410 247

## **LINE OF CREDIT REFEREES**

Phil Grey                      Holcim                      Phone: 0419 475 956  
 Phil McKenzie                      Advance Foundation Solutions                      Phone: 0439 819 764  
 Greg Dewes                      Patches Asphalt                      Phone: 0419 008 282